

FBLN5 Antibody
Purified Mouse Monoclonal Antibody
Catalog # AO1164a

Specification

FBLN5 Antibody - Product Information

Application	WB, IHC, E
Primary Accession	O9UBX5
Reactivity	Human
Host	Mouse
Clonality	Monoclonal
Isotype	IgG1

Description

FBLN5: fibulin 5. The protein is a secreted, extracellular matrix protein containing an Arg-Gly-Asp (RGD) motif and calcium-binding EGF-like domains. It promotes adhesion of endothelial cells through interaction of integrins and the RGD motif. It is prominently expressed in developing arteries but less so in adult vessels. However, its expression is reinduced in balloon-injured vessels and atherosclerotic lesions, notably in intimal vascular smooth muscle cells and endothelial cells. Therefore, the protein encoded by this gene may play a role in vascular development and remodeling.

Immunogen

Purified recombinant fragment of FBLN5 (aa242-448) expressed in E. Coli.

Formulation

Ascitic fluid containing 0.03% sodium azide.

FBLN5 Antibody - Additional Information

Gene ID 10516

Other Names

Fibulin-5, FIBL-5, Developmental arteries and neural crest EGF-like protein, Dance, Urine p50 protein, UP50, FBLN5, DANCE

Dilution

WB~~1/500 - 1/2000
IHC~~1/200 - 1/1000
E~~N/A

Storage

Maintain refrigerated at 2-8°C for up to 6 months. For long term storage store at -20°C in small aliquots to prevent freeze-thaw cycles.

Precautions

FBLN5 Antibody is for research use only and not for use in diagnostic or therapeutic procedures.

FBLN5 Antibody - Protein Information

Name FBLN5**Synonyms** DANCE**Function**

Essential for elastic fiber formation, is involved in the assembly of continuous elastin (ELN) polymer and promotes the interaction of microfibrils and ELN (PubMed:18185537). Stabilizes and organizes elastic fibers in the skin, lung and vasculature (By similarity). Promotes adhesion of endothelial cells through interaction of integrins and the RGD motif. Vascular ligand for integrin receptors which may play a role in vascular development and remodeling (PubMed:10428823). May act as an adapter that mediates the interaction between FBN1 and ELN (PubMed:17255108).

Cellular Location

Secreted. Secreted, extracellular space, extracellular matrix. Note=co-localizes with ELN in elastic fibers.

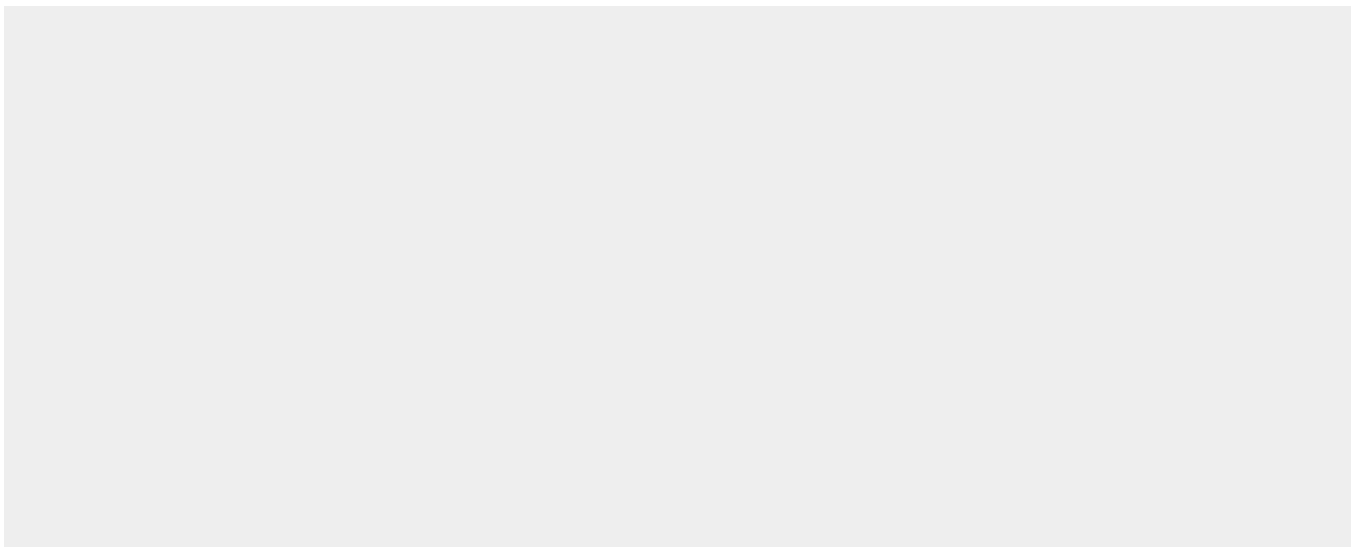
Tissue Location

Expressed in skin fibroblasts (at protein level) (PubMed:17035250). Expressed predominantly in heart, ovary, and colon but also in kidney, pancreas, testis, lung and placenta. Not detectable in brain, liver, thymus, prostate, or peripheral blood leukocytes (PubMed:10428823).

FBLN5 Antibody - Protocols

Provided below are standard protocols that you may find useful for product applications.

- [Western Blot](#)
- [Blocking Peptides](#)
- [Dot Blot](#)
- [Immunohistochemistry](#)
- [Immunofluorescence](#)
- [Immunoprecipitation](#)
- [Flow Cytometry](#)
- [Cell Culture](#)

FBLN5 Antibody - Images

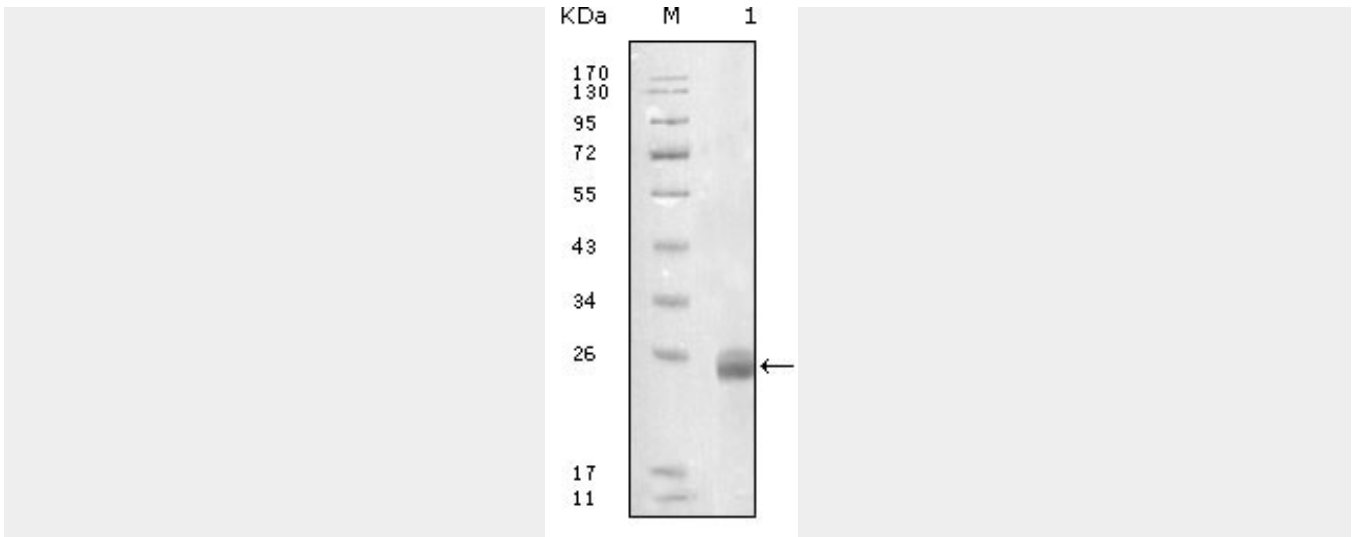


Figure 1: Western blot analysis using FBLN5 mouse mAb against truncated FBLN5-His recombinant protein.

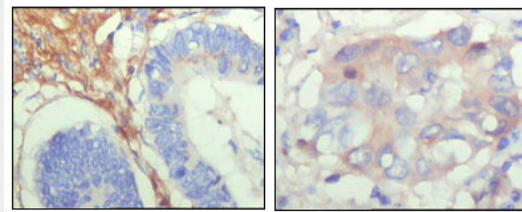


Figure 2: Immunohistochemical analysis of paraffin-embedded human colon cancer (left) and breast cancer (right) showing cytoplasmic localization with DAB staining using FBLN5 mouse mAb.

FBLN5 Antibody - References

1. Am J Hum Genet. 2003 Apr;72(4):998-1004.
2. Genome Res. 2003 Oct;13(10):2265-70
3. N Engl J Med. 2004 Jul 22;351(4):346-53.
4. Surgery. 2005 Aug;138(2):352-9.